
資料1701

全国集乳路線別生乳成分調査

(第42報)

平成29年3月

公益財団法人 日本乳業技術協会

全国集乳路線別生乳成分調査（第42報）

公益財団法人 日本乳業技術協会

本調査は乳業各社の協力を得てわが国の原料乳の乳質を継続的に調査し、その実態を把握し乳質改善、酪農・乳業の経営合理化並びにその発展に寄与することを目的として、昭和50年以降実施している。平成28年(1月～12月)の調査成績を以下に報告する。

調査協力会社

協同乳業株式会社、グリコ乳業株式会社、信州ミルクランド株式会社、新潟県農協乳業株式会社、北陸酪農農業協同組合連合会、株式会社明治、森永乳業株式会社、雪印メグミルク株式会社、よつ葉乳業株式会社

1. 調査路線数

工場に搬入された生乳をローリー単位で、調査路線数とした。

路線数は7,843で、前年に比べて北海道(+137)、東海(+6)、中国(+3)、四国(+12)、九州(+12)で増加し、東北(-3)、北陸(-10)、東山(-8)、近畿(-3)で減少し、総計では146路線増加した。

全生乳生産量(1日当たり)に対する調査対象乳量の割合は40.6%(前年40.2%)であった。

2. 乳脂肪分(F)の変動

全国通年平均は3.911%(前年比0.037ポイント増)を示した。

地域別のFは図1の通りで、全国通年平均を上回った地域は北海道(3.924%)、九州(3.955%)であった。

Fの月別変動は図2の通りで、8月(3.761%)を最低として、5月～9月で平均より低く、1月～4月、10月～12月で平均より高かった。

3. 無脂乳固形分(SNF)の変動

全国通年平均は8.797%(前年比0.006ポイント増)を示した。

地域別のSNFは図3の通りで、全国通年平均を上回った地域は北海道(8.802%)、北陸(8.801%)、東海(8.816%)、九州(8.803%)であった。

SNFの月別変動は図4の通りで、8月(8.698%)を最低として、4月～9月で平均より低く、1月～3月、10月～12月で平均より高かった。

4. F、SNFの分布(乳量%)

F、SNFの分布(乳量%)は図5、図6に示した。更に、地域別、月別のF、SNFの分布を表1～表4に示した。

全国通年平均でF3.5%未満の乳量割合は0.7%(前年1.0%)、3.5%以上3.6%未満の割合は1.5%(前年2.2%)を示し、3.6%未満の割合は前年に比べて減少した。

地域別のF3.5%未満の割合は北海道(0.9%)が平均より高率を示した。

月別のF3.5%未満の割合は5月(1.1%)、6月(1.3%)、7月(1.5%)、8月(1.8%)、9月(1.3%)の各月が平均より高率を示した。

全国通年平均でSNF8.3%未満の乳量割合は0.0%(同0.0%)、8.3%以上8.4%未満の割合は0.0%(同0.0%)を示し、またSNF8.5%未満までの割合は0.1%(前年0.2%)と前年に比べて減少した。

5. まとめ

全国通年平均でFは3.911%、SNFは8.797%で、前年に比べFは0.037ポイント増を示し、SNFは0.006ポイント増を示した。

また、地域別のF及びSNFは北海道、九州が共に平均を上回った。

F3.6%未満の乳量割合、SNF8.5%未満の乳量割合は共に前年に比べて減少した。

表1 平成28年 Fの分布(地域別)

| 地域 | <3.5 | 3.5≤~<3.6 | 3.6≤~<3.7 | 3.7≤~<3.8 | 3.8≤~<3.9 | 3.9≤~<4.0 | 4.0≤~<4.1 | 4.1≤~<4.2 | 4.2≤~<4.3 | 4.3≤ |
|-----|------|-----------|-----------|-----------|-----------|-----------|-----------|-----------|-----------|------|
| 北海道 | 0.9 | 1.7 | 5.0 | 13.5 | 20.7 | 24.5 | 20.9 | 8.9 | 3.1 | 0.8 |
| 東北 | 0.0 | 1.2 | 11.6 | 21.0 | 22.7 | 35.5 | 6.3 | 1.2 | 0.1 | 0.4 |
| 関東 | 0.1 | 1.3 | 3.6 | 35.1 | 21.1 | 30.8 | 5.8 | 2.1 | 0.1 | 0.0 |
| 北陸 | 0.0 | 0.0 | 11.2 | 18.9 | 25.5 | 22.2 | 15.4 | 6.4 | 0.4 | 0.0 |
| 東山 | 0.0 | 4.6 | 21.6 | 26.4 | 18.0 | 19.0 | 8.6 | 1.4 | 0.4 | 0.0 |
| 東海 | 0.7 | 0.8 | 9.5 | 30.4 | 23.7 | 19.7 | 13.7 | 1.3 | 0.0 | 0.2 |
| 近畿 | 0.3 | 1.3 | 11.2 | 21.3 | 23.9 | 21.4 | 14.6 | 4.0 | 2.0 | 0.0 |
| 中国 | 0.0 | 0.0 | 11.4 | 34.5 | 21.0 | 20.0 | 8.9 | 4.2 | 0.0 | 0.0 |
| 四国 | 0.0 | 0.3 | 13.8 | 28.0 | 25.4 | 22.6 | 7.5 | 2.4 | 0.0 | 0.0 |
| 九州 | 0.0 | 0.0 | 1.5 | 13.0 | 26.7 | 20.4 | 23.6 | 12.3 | 1.2 | 1.3 |
| 全国 | 0.7 | 1.5 | 5.5 | 16.5 | 21.2 | 24.7 | 18.8 | 7.9 | 2.5 | 0.7 |

表2 平成28年 Fの分布(月別)

| 月 | <3.5 | 3.5≤~<3.6 | 3.6≤~<3.7 | 3.7≤~<3.8 | 3.8≤~<3.9 | 3.9≤~<4.0 | 4.0≤~<4.1 | 4.1≤~<4.2 | 4.2≤~<4.3 | 4.3≤ |
|-----|------|-----------|-----------|-----------|-----------|-----------|-----------|-----------|-----------|------|
| 1月 | 0.1 | 0.3 | 1.0 | 2.6 | 10.1 | 28.7 | 34.8 | 17.6 | 3.9 | 0.9 |
| 2月 | 0.3 | 0.5 | 1.1 | 3.5 | 9.9 | 32.1 | 36.9 | 11.5 | 3.5 | 0.7 |
| 3月 | 0.2 | 0.2 | 2.2 | 4.0 | 12.8 | 38.3 | 30.3 | 9.3 | 2.2 | 0.5 |
| 4月 | 0.5 | 1.4 | 2.5 | 7.8 | 28.1 | 37.3 | 18.4 | 2.7 | 1.1 | 0.2 |
| 5月 | 1.1 | 1.5 | 5.8 | 25.2 | 35.5 | 22.5 | 6.1 | 2.1 | 0.2 | 0.0 |
| 6月 | 1.3 | 2.7 | 7.4 | 34.4 | 30.3 | 18.5 | 5.1 | 0.3 | 0.0 | 0.0 |
| 7月 | 1.5 | 2.0 | 11.4 | 32.0 | 35.4 | 14.2 | 3.1 | 0.3 | 0.0 | 0.1 |
| 8月 | 1.8 | 5.8 | 19.5 | 35.3 | 25.8 | 9.9 | 1.9 | 0.0 | 0.0 | 0.0 |
| 9月 | 1.3 | 3.1 | 10.0 | 33.6 | 28.0 | 18.5 | 3.9 | 1.5 | 0.1 | 0.0 |
| 10月 | 0.3 | 0.6 | 3.0 | 13.7 | 18.8 | 27.7 | 23.6 | 9.3 | 1.9 | 1.1 |
| 11月 | 0.3 | 0.3 | 0.9 | 2.8 | 8.5 | 23.6 | 31.8 | 18.9 | 10.8 | 2.1 |
| 12月 | 0.1 | 0.0 | 0.8 | 1.6 | 9.1 | 24.3 | 31.6 | 22.6 | 7.2 | 2.7 |
| 年間 | 0.7 | 1.5 | 5.5 | 16.5 | 21.2 | 24.7 | 18.8 | 7.9 | 2.5 | 0.7 |

表3 平成28年 SNFの分布(地域別)

| 地域 | <8.3 | 8.3≤~<8.4 | 8.4≤~<8.5 | 8.5≤~<8.6 | 8.6≤~<8.7 | 8.7≤~<8.8 | 8.8≤~<8.9 | 8.9≤~<9.0 | 9.0≤~<9.1 | 9.1≤ |
|-----|------|-----------|-----------|-----------|-----------|-----------|-----------|-----------|-----------|------|
| 北海道 | 0.0 | 0.0 | 0.0 | 1.5 | 11.0 | 35.8 | 36.1 | 13.7 | 1.8 | 0.1 |
| 東北 | 0.0 | 0.0 | 0.0 | 3.2 | 24.3 | 38.7 | 30.2 | 3.6 | 0.0 | 0.0 |
| 関東 | 0.0 | 0.0 | 0.1 | 1.3 | 16.1 | 42.7 | 34.6 | 4.9 | 0.2 | 0.1 |
| 北陸 | 0.0 | 0.0 | 0.0 | 0.3 | 5.8 | 43.5 | 38.9 | 9.9 | 1.6 | 0.0 |
| 東山 | 0.0 | 0.0 | 1.9 | 10.7 | 35.5 | 38.2 | 13.2 | 0.5 | 0.0 | 0.0 |
| 東海 | 0.0 | 0.0 | 0.0 | 0.8 | 12.1 | 28.1 | 36.4 | 18.8 | 3.8 | 0.0 |
| 近畿 | 0.0 | 0.0 | 0.0 | 4.3 | 21.1 | 31.1 | 30.2 | 8.3 | 3.3 | 1.7 |
| 中国 | 0.0 | 0.0 | 0.0 | 3.0 | 9.7 | 43.1 | 36.1 | 8.1 | 0.0 | 0.0 |
| 四国 | 0.0 | 0.0 | 0.3 | 3.2 | 29.2 | 38.4 | 24.8 | 3.9 | 0.1 | 0.1 |
| 九州 | 0.0 | 0.0 | 1.2 | 3.3 | 11.0 | 25.3 | 44.9 | 10.2 | 3.5 | 0.6 |
| 全国 | 0.0 | 0.0 | 0.1 | 1.8 | 12.2 | 35.9 | 35.8 | 12.3 | 1.7 | 0.2 |

表4 平成28年 SNFの分布(月別)

| 月 | <8.3 | 8.3≤~<8.4 | 8.4≤~<8.5 | 8.5≤~<8.6 | 8.6≤~<8.7 | 8.7≤~<8.8 | 8.8≤~<8.9 | 8.9≤~<9.0 | 9.0≤~<9.1 | 9.1≤ |
|-----|------|-----------|-----------|-----------|-----------|-----------|-----------|-----------|-----------|------|
| 1月 | 0.0 | 0.0 | 0.0 | 0.3 | 2.3 | 22.4 | 51.8 | 20.4 | 2.3 | 0.5 |
| 2月 | 0.0 | 0.0 | 0.0 | 0.3 | 3.7 | 25.6 | 54.9 | 13.2 | 2.3 | 0.0 |
| 3月 | 0.0 | 0.0 | 0.0 | 0.5 | 5.3 | 32.3 | 48.9 | 11.6 | 1.2 | 0.2 |
| 4月 | 0.0 | 0.0 | 0.0 | 1.7 | 8.4 | 44.1 | 38.3 | 7.1 | 0.4 | 0.0 |
| 5月 | 0.0 | 0.0 | 0.0 | 1.0 | 10.2 | 53.6 | 29.0 | 6.0 | 0.2 | 0.0 |
| 6月 | 0.0 | 0.0 | 0.3 | 1.7 | 14.4 | 60.3 | 19.9 | 3.3 | 0.1 | 0.0 |
| 7月 | 0.0 | 0.0 | 0.0 | 3.2 | 30.0 | 50.8 | 14.7 | 1.2 | 0.1 | 0.0 |
| 8月 | 0.0 | 0.0 | 0.8 | 8.5 | 40.5 | 40.0 | 9.3 | 0.9 | 0.0 | 0.0 |
| 9月 | 0.0 | 0.0 | 0.1 | 3.1 | 21.5 | 50.6 | 22.7 | 2.0 | 0.0 | 0.0 |
| 10月 | 0.0 | 0.0 | 0.0 | 0.2 | 5.6 | 26.0 | 49.3 | 16.4 | 2.3 | 0.2 |
| 11月 | 0.0 | 0.0 | 0.0 | 0.4 | 1.5 | 10.4 | 43.9 | 36.4 | 6.8 | 0.6 |
| 12月 | 0.0 | 0.0 | 0.0 | 0.2 | 2.2 | 11.8 | 48.7 | 31.5 | 5.2 | 0.4 |
| 年間 | 0.0 | 0.0 | 0.1 | 1.8 | 12.2 | 35.9 | 35.8 | 12.3 | 1.7 | 0.2 |

図1 地域別 F

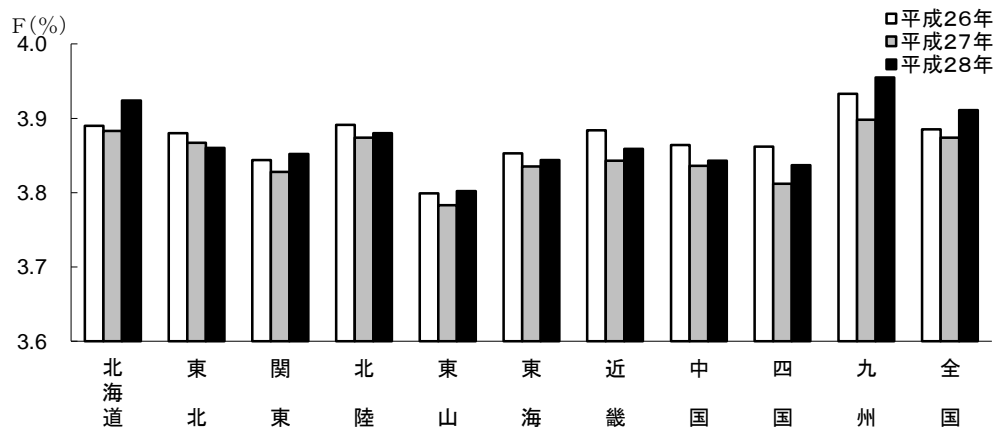


図3 地域別 SNF

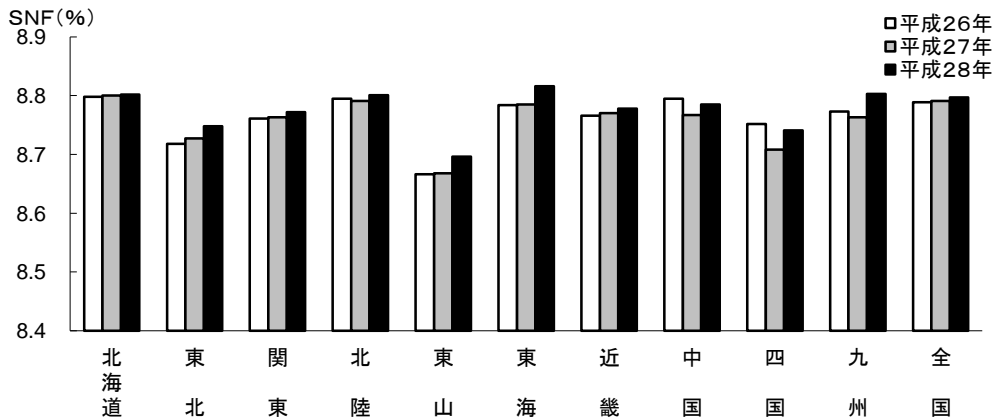


図5 Fの分布

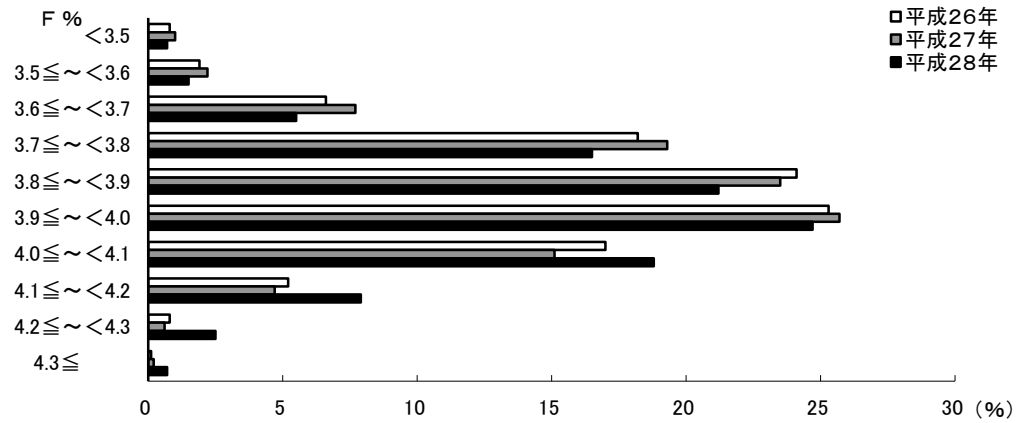


図6 SNFの分布

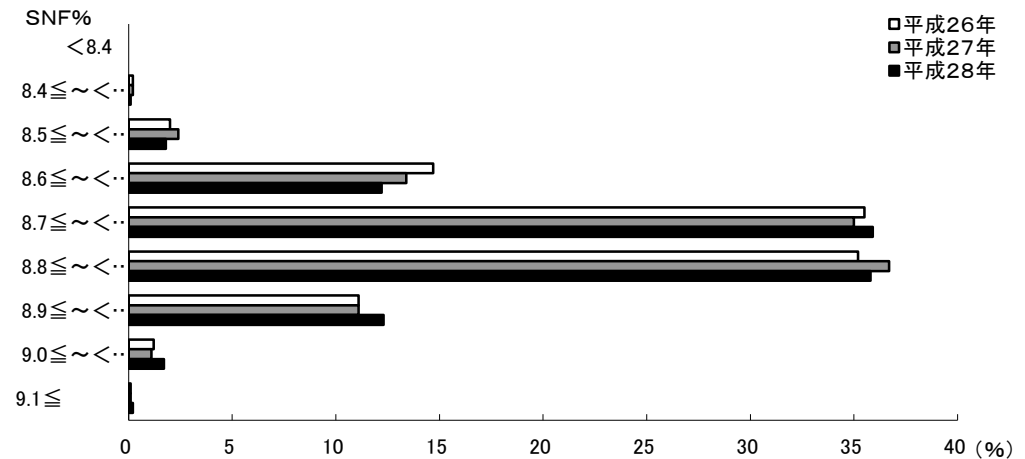


図2 平成28年 Fの変動

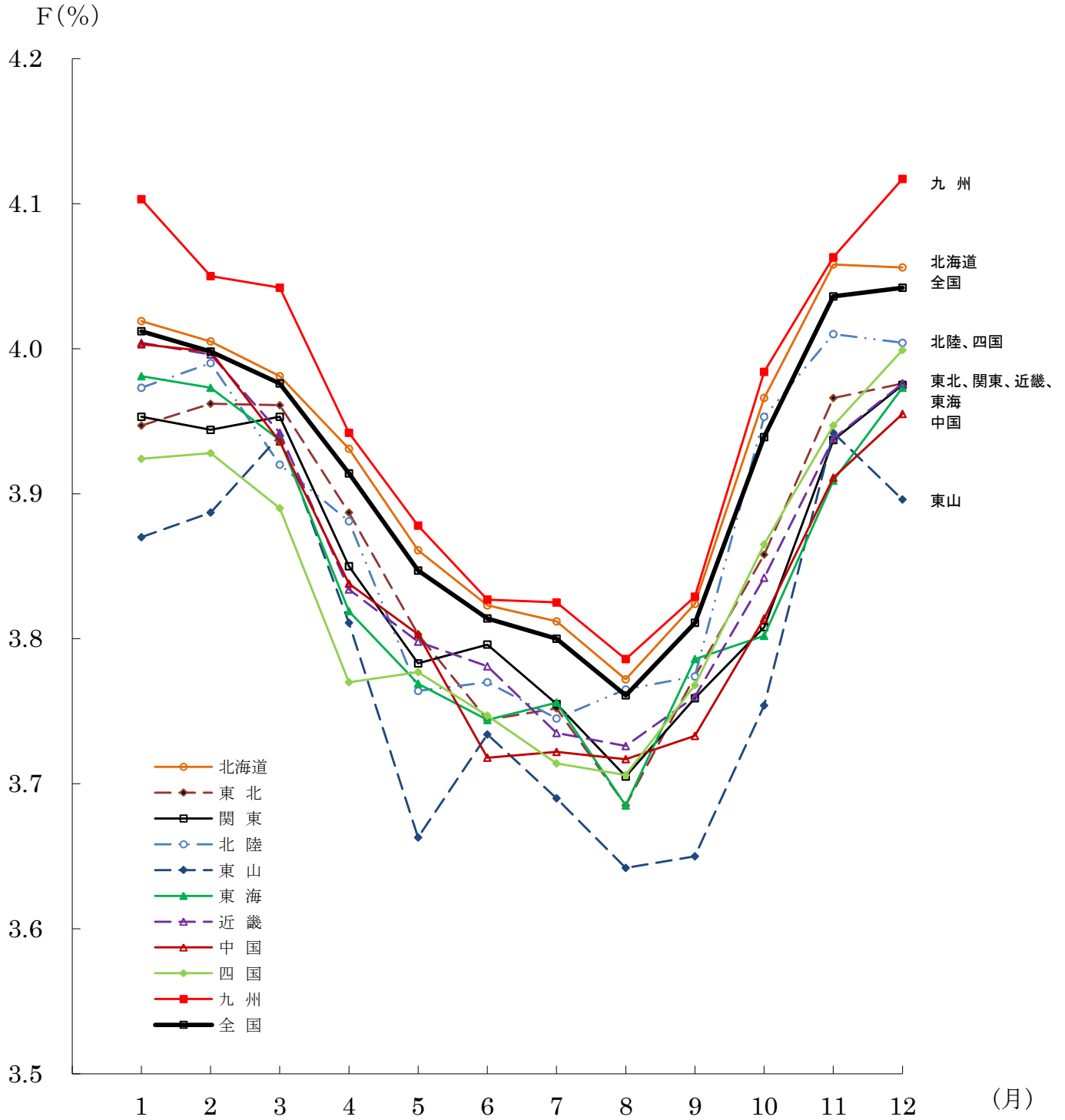
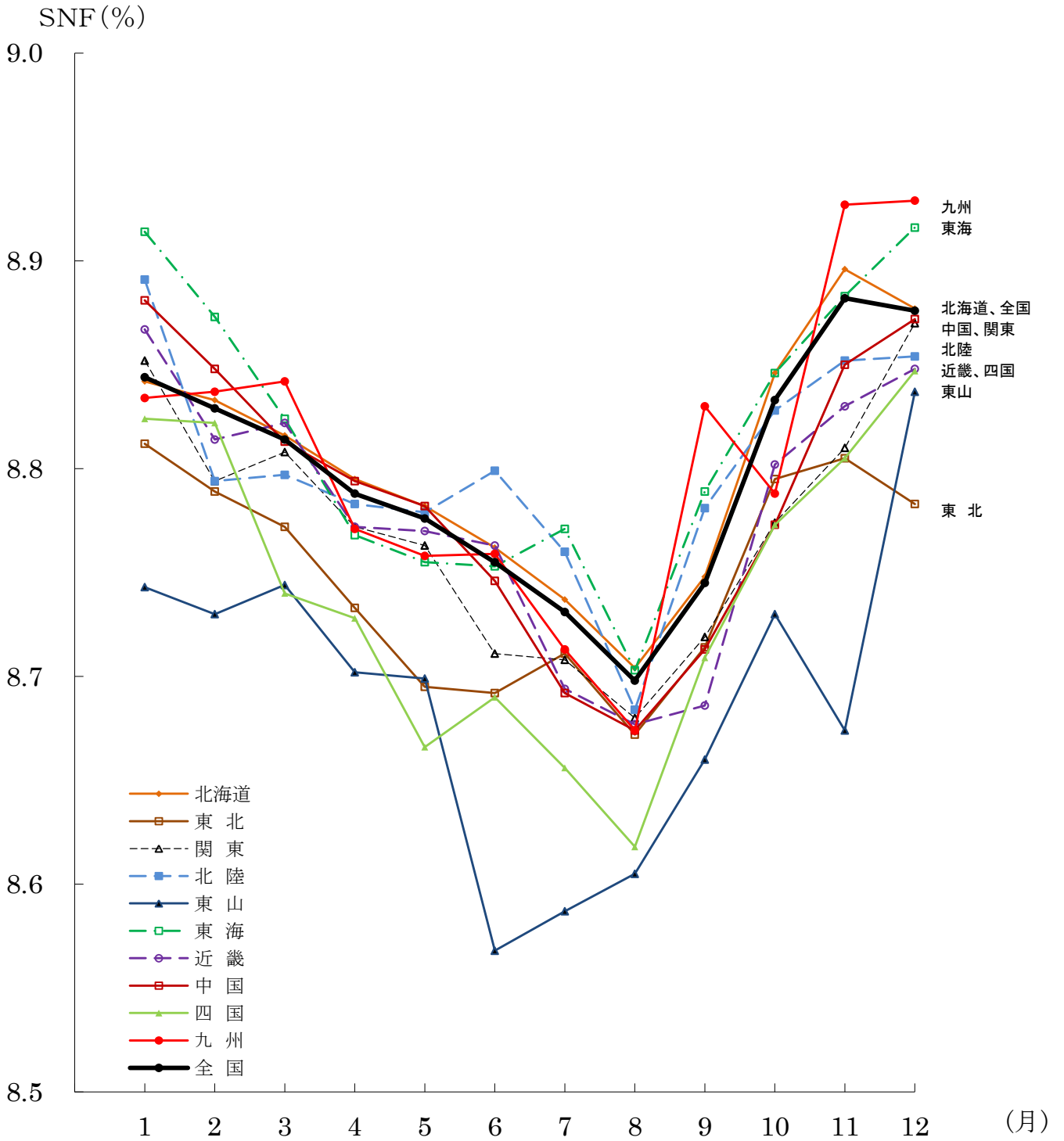


図4 平成28年 SNFの変動



平成28年全国集乳路線別生乳成分表(平成28年1月～12月)

| 区 分 | 1 月 | | 2 月 | | 3 月 | | 4 月 | | 5 月 | | 6 月 | | 7 月 | | 8 月 | | 9 月 | | 1 0 月 | | 1 1 月 | | 1 2 月 | | 合計・平均 | | |
|-----|------|-------|---------|-------|---------|-------|---------|-------|---------|-------|---------|-------|---------|-------|---------|--------|---------|-------|---------|-------|---------|-------|---------|-------|---------|-------|---------|
| | 分析値 | 前年比 | 分析値 | 前年比 | 分析値 | 前年比 | 分析値 | 前年比 | 分析値 | 前年比 | 分析値 | 前年比 | 分析値 | 前年比 | 分析値 | 前年比 | 分析値 | 前年比 | 分析値 | 前年比 | 分析値 | 前年比 | 分析値 | 前年比 | 分析値 | 前年比 | 分析値 |
| 北海道 | A | 13 | △ 1 | 12 | △ 1 | 12 | △ 1 | 11 | 0 | 13 | 2 | 14 | △ 1 | 14 | 0 | 12 | △ 3 | 15 | 0 | 14 | 0 | 12 | △ 2 | 13 | 0 | 155 | △ 7 |
| | B | 456 | 11 | 460 | 19 | 457 | 18 | 462 | 13 | 464 | 13 | 471 | 17 | 484 | 23 | 464 | 1 | 474 | 18 | 458 | △ 14 | 470 | 12 | 468 | 6 | 5588 | 137 |
| | C | 4.019 | 0.046 | 4.005 | 0.060 | 3.981 | 0.054 | 3.931 | 0.039 | 3.861 | 0.054 | 3.823 | 0.061 | 3.812 | 0.039 | 3.772 | 0.045 | 3.824 | △ 0.013 | 3.966 | 0.024 | 4.058 | 0.050 | 4.056 | 0.048 | 3.924 | 0.041 |
| | D | 8.842 | △ 0.013 | 8.833 | △ 0.014 | 8.816 | △ 0.023 | 8.795 | △ 0.023 | 8.782 | 0.016 | 8.762 | 0.014 | 8.737 | 0.016 | 8.704 | 0.014 | 8.748 | △ 0.031 | 8.846 | 0.004 | 8.896 | 0.041 | 8.877 | 0.033 | 8.802 | 0.002 |
| | E | 4.194 | | 4.120 | | 4.230 | | 4.030 | | 4.070 | | 3.954 | | 3.935 | | 3.866 | | 4.157 | | 4.080 | | 4.193 | | 4.229 | | | |
| | F | 9.030 | | 8.861 | | 9.010 | | 8.826 | | 8.862 | | 8.851 | | 8.810 | | 8.740 | | 8.835 | | 8.899 | | 8.922 | | 8.993 | | | |
| | G | 3.997 | | 3.951 | | 3.951 | | 3.903 | | 3.750 | | 3.770 | | 3.773 | | 3.742 | | 3.766 | | 3.897 | | 4.007 | | 3.991 | | | |
| | H | 8.769 | | 8.650 | | 8.721 | | 8.737 | | 8.720 | | 8.695 | | 8.655 | | 8.640 | | 8.677 | | 8.771 | | 8.723 | | 8.590 | | | |
| | I | 59.3 | 1.1 | 58.4 | 0.6 | 59.6 | 1.2 | 58.8 | △ 0.1 | 58.2 | 0.2 | 59.7 | 1.5 | 61.1 | 4.7 | 59.1 | 0.9 | 59.0 | 0.2 | 58.8 | △ 1.7 | 60.0 | △ 0.4 | 59.6 | △ 0.6 | 59.1 | 0.2 |
| | J | 4 | 1 | 3 | 0 | 4 | 0 | 3 | 0 | 3 | 0 | 3 | 0 | 4 | 1 | 4 | 1 | 4 | 1 | 4 | 0 | 3 | 0 | 3 | 0 | 42 | 4 |
| 東北 | A | 19 | 1 | 16 | △ 2 | 19 | 0 | 16 | 1 | 16 | 1 | 17 | 0 | 17 | 0 | 18 | 1 | 17 | △ 2 | 17 | △ 1 | 16 | △ 1 | 16 | △ 1 | 204 | △ 3 |
| | B | 3.947 | △ 0.018 | 3.962 | △ 0.023 | 3.961 | 0.015 | 3.887 | 0.011 | 3.803 | 0.045 | 3.744 | 0.009 | 3.752 | △ 0.004 | 3.685 | △ 0.034 | 3.774 | △ 0.066 | 3.858 | △ 0.070 | 3.966 | 0.030 | 3.976 | 0.029 | 3.860 | △ 0.007 |
| | C | 8.812 | 0.051 | 8.789 | 0.010 | 8.772 | 0.042 | 8.733 | 0.011 | 8.695 | △ 0.008 | 8.692 | 0.011 | 8.711 | 0.017 | 8.672 | 0.032 | 8.714 | 0.036 | 8.795 | 0.027 | 8.805 | 0.006 | 8.783 | △ 0.005 | 8.748 | 0.021 |
| | D | 3.990 | | 3.971 | | 4.069 | | 3.960 | | 3.840 | | 3.770 | | 3.840 | | 3.760 | | 3.860 | | 3.980 | | 3.987 | | 3.990 | | | |
| | E | 8.853 | | 8.850 | | 8.830 | | 8.780 | | 8.740 | | 8.780 | | 8.810 | | 8.750 | | 8.810 | | 8.870 | | 8.910 | | 8.910 | | | |
| | F | 3.780 | | 3.930 | | 3.911 | | 3.846 | | 3.775 | | 3.728 | | 3.690 | | 3.651 | | 3.718 | | 3.820 | | 3.940 | | 3.968 | | | |
| | G | 8.763 | | 8.747 | | 8.734 | | 8.708 | | 8.664 | | 8.671 | | 8.655 | | 8.625 | | 8.646 | | 8.730 | | 8.749 | | 8.714 | | | |
| | H | 7.9 | 1.5 | 5.8 | △ 1.3 | 8.7 | 1.6 | 5.6 | △ 0.1 | 5.8 | 0.3 | 6.6 | △ 0.3 | 6.9 | 0.5 | 6.9 | △ 0.5 | 6.5 | △ 1.1 | 7.0 | 0.8 | 5.9 | △ 0.1 | 5.9 | △ 1.3 | 6.6 | 0.0 |
| | I | 6 | 0 | 6 | 0 | 6 | 0 | 5 | △ 1 | 5 | △ 1 | 5 | △ 1 | 5 | △ 1 | 6 | 0 | 6 | 0 | 6 | 0 | 5 | 0 | 5 | △ 1 | 66 | △ 5 |
| | J | 44 | 9 | 45 | 15 | 48 | 12 | 39 | △ 4 | 39 | △ 7 | 40 | △ 9 | 39 | △ 7 | 43 | 3 | 40 | △ 13 | 38 | △ 2 | 43 | 7 | 40 | △ 4 | 498 | 0 |
| 関東 | A | 3.953 | △ 0.015 | 3.944 | 0.004 | 3.953 | 0.056 | 3.850 | 0.012 | 3.783 | 0.050 | 3.796 | 0.077 | 3.755 | 0.003 | 3.705 | 0.030 | 3.759 | △ 0.028 | 3.808 | △ 0.072 | 3.937 | 0.031 | 3.975 | 0.057 | 3.852 | 0.024 |
| | B | 8.852 | 0.017 | 8.794 | △ 0.034 | 8.808 | 0.018 | 8.772 | 0.029 | 8.763 | 0.064 | 8.711 | △ 0.036 | 8.708 | 0.010 | 8.680 | 0.018 | 8.719 | △ 0.029 | 8.774 | △ 0.022 | 8.810 | △ 0.027 | 8.870 | 0.054 | 8.772 | 0.009 |
| | C | 3.988 | | 3.981 | | 4.073 | | 3.881 | | 3.801 | | 3.820 | | 3.793 | | 3.748 | | 3.835 | | 3.870 | | 3.976 | | 4.014 | | | |
| | D | 8.864 | | 8.812 | | 8.915 | | 8.829 | | 8.853 | | 8.734 | | 8.749 | | 8.760 | | 8.850 | | 8.847 | | 8.848 | | 8.922 | | | |
| | E | 3.883 | | 3.869 | | 3.873 | | 3.810 | | 3.725 | | 3.758 | | 3.707 | | 3.623 | | 3.660 | | 3.733 | | 3.898 | | 3.852 | | | |
| | F | 8.820 | | 8.683 | | 8.677 | | 8.721 | | 8.672 | | 8.635 | | 8.680 | | 8.620 | | 8.697 | | 8.746 | | 8.766 | | 8.760 | | | |
| | G | 23.2 | 0.1 | 23.5 | 4.4 | 23.7 | 2.6 | 21.7 | △ 0.6 | 21.0 | △ 3.4 | 22.9 | △ 3.0 | 22.3 | △ 0.9 | 25.6 | 5.3 | 24.5 | 1.6 | 22.9 | △ 1.8 | 22.5 | △ 4.2 | 23.4 | △ 3.7 | 23.0 | △ 0.3 |
| | H | 2 | 0 | 2 | 0 | 2 | 0 | 2 | 0 | 2 | 0 | 2 | 0 | 2 | 0 | 2 | 0 | 2 | 0 | 2 | 0 | 2 | 0 | 2 | 0 | 24 | 0 |
| | I | 16 | △ 1 | 13 | △ 2 | 13 | △ 2 | 14 | △ 3 | 14 | △ 1 | 14 | 0 | 14 | 0 | 16 | 1 | 15 | △ 2 | 14 | △ 1 | 16 | 2 | 15 | △ 1 | 174 | △ 10 |
| | J | 3.973 | △ 0.015 | 3.990 | 0.019 | 3.920 | △ 0.007 | 3.881 | 0.004 | 3.764 | △ 0.016 | 3.770 | 0.009 | 3.745 | 0.000 | 3.765 | 0.015 | 3.774 | △ 0.057 | 3.953 | 0.010 | 4.010 | 0.083 | 4.004 | 0.057 | 3.880 | 0.006 |
| 北陸 | A | 8.891 | 0.066 | 8.794 | △ 0.055 | 8.797 | △ 0.017 | 8.783 | 0.019 | 8.779 | 0.023 | 8.799 | 0.072 | 8.760 | 0.076 | 8.684 | △ 0.018 | 8.781 | 0.047 | 8.828 | △ 0.025 | 8.852 | △ 0.024 | 8.854 | △ 0.046 | 8.801 | 0.010 |
| | B | 3.978 | | 4.008 | | 3.935 | | 3.914 | | 3.844 | | 3.822 | | 3.816 | | 3.767 | | 3.817 | | 3.975 | | 4.028 | | 4.049 | | | |
| | C | 8.913 | | 8.842 | | 8.812 | | 8.805 | | 8.803 | | 8.810 | | 8.775 | | 8.730 | | 8.831 | | 8.839 | | 8.853 | | 8.862 | | | |
| | D | 3.971 | | 3.961 | | 3.908 | | 3.861 | | 3.710 | | 3.737 | | 3.697 | | 3.764 | | 3.748 | | 3.923 | | 4.001 | | 3.979 | | | |
| | E | 8.846 | | 8.764 | | 8.778 | | 8.768 | | 8.743 | | 8.784 | | 8.737 | | 8.663 | | 8.751 | | 8.820 | | 8.851 | | 8.849 | | | |
| | F | 38.3 | △ 7.5 | 32.2 | 2.8 | 27.3 | △ 5.7 | 32.3 | △ 7.6 | 31.3 | 0.8 | 32.1 | △ 2.9 | 31.7 | △ 15.9 | 40.8 | 8.7 | 33.7 | △ 2.5 | 30.3 | △ 15.4 | 37.3 | 3.2 | 37.7 | 0.1 | 33.6 | △ 2.0 |
| | G | 1 | 0 | 1 | 0 | 1 | 0 | 1 | 0 | 1 | 0 | 1 | 0 | 1 | 0 | 1 | 0 | 1 | 0 | 1 | 0 | 1 | 0 | 1 | 0 | 12 | 0 |
| | H | 12 | △ 1 | 13 | 1 | 13 | 1 | 14 | 0 | 13 | 1 | 12 | △ 1 | 10 | △ 5 | 8 | △ 3 | 10 | 1 | 15 | 1 | 14 | 0 | 13 | △ 3 | 147 | △ 8 |
| | I | 3.870 | △ 0.071 | 3.887 | △ 0.004 | 3.940 | 0.087 | 3.811 | 0.018 | 3.663 | 0.052 | 3.734 | 0.072 | 3.690 | △ 0.020 | 3.642 | 0.068 | 3.650 | △ 0.116 | 3.754 | △ 0.125 | 3.942 | 0.094 | 3.896 | 0.059 | 3.802 | 0.019 |
| | J | 8.743 | 0.001 | 8.730 | △ 0.036 | 8.744 | 0.036 | 8.702 | 0.023 | 8.699 | 0.137 | 8.568 | △ 0.116 | 8.587 | △ 0.006 | 8.605 | 0.130 | 8.660 | 0.110 | 8.730 | 0.011 | 8.674 | △ 0.040 | 8.837 | 0.093 | 8.696 | 0.028 |
| 山 東 | A | 3.870 | | 3.887 | | 3.940 | | 3.811 | | 3.663 | | 3.734 | | 3.690 | | 3.642 | | 3.650 | | 3.754 | | 3.942 | | 3.896 | | | |
| | B | 8.743 | | 8.730 | | 8.744 | | 8.702 | | 8.699 | | 8.568 | | 8.587 | | 8.605 | | 8.660 | | 8.730 | | 8.674 | | 8.837 | | | |
| | C | 3.870 | | 3.887 | | 3.940 | | 3.811 | | 3.663 | | 3.734 | | 3.690 | | 3.642 | | 3.650 | | 3.754 | | 3.942 | | 3.896 | | | |
| | D | 8.743 | | 8.730 | | 8.744 | | 8.702 | | 8.699 | | 8.568 | | 8.587 | | 8.605 | | 8.660 | | 8.730 | | 8.674 | | 8.837 | | | |
| | E | 3.870 | | 3.887 | | 3.940 | | 3.811 | | 3.663 | | 3.734 | | 3.690 | | 3.642 | | 3.650 | | 3.754 | | 3.942 | | 3.896 | | | |
| | F | 8.743 | | 8.730 | | 8.744 | | 8.702 | | 8.699 | | 8.568 | | 8.587 | | 8.605 | | 8.660 | | 8.730 | | 8.674 | | 8.837 | | | |
| G | 19.8 | △ 0.5 | 26.2 | 4.0 | 23.4 | 4.0 | 24.8 | △ 2.7 | 23.6 | 1.1 | 21.4 | △ 3.1 | 19.1 | △ 0.6 | 10.4 | △ 13.2 | 19.6 | △ 0.6 | 29.9 | 0.4 | 29.4 | 5.4 | 21.6 | △ 5.0 | 22.4 | △ 1.1 | |

| 区分 | 1月 | | 2月 | | 3月 | | 4月 | | 5月 | | 6月 | | 7月 | | 8月 | | 9月 | | 10月 | | 11月 | | 12月 | | 合計・平均 | | | | |
|----|--------|-------|--------|-------|--------|-------|--------|-------|--------|-------|--------|-------|--------|-------|--------|-------|--------|-------|--------|-------|--------|-------|-------|-------|--------|-------|-------|-----|--|
| | 分析値 | 前年比 | 分析値 | 前年比 | 分析値 | 前年比 | 分析値 | 前年比 | 分析値 | 前年比 | 分析値 | 前年比 | 分析値 | 前年比 | 分析値 | 前年比 | 分析値 | 前年比 | 分析値 | 前年比 | 分析値 | 前年比 | 分析値 | 前年比 | 分析値 | 前年比 | 分析値 | 前年比 | |
| 東海 | A | 4 | △1 | 5 | △1 | 3 | △3 | 4 | 0 | 5 | 1 | 3 | △3 | 3 | △1 | 3 | △1 | 3 | 0 | 4 | 1 | 3 | 0 | 4 | 1 | 44 | △7 | | |
| | B | 17 | △1 | 19 | 1 | 16 | △3 | 20 | 2 | 22 | 3 | 19 | 0 | 19 | 0 | 16 | △4 | 21 | 4 | 18 | 3 | 17 | △2 | 19 | 3 | 223 | 6 | | |
| | C | 3.981 | 0.048 | 3.973 | 0.002 | 3.937 | 0.002 | 3.819 | 0.000 | 3.769 | 0.008 | 3.744 | △0.010 | 3.756 | △0.008 | 3.685 | 0.020 | 3.786 | 0.006 | 3.802 | △0.064 | 3.909 | 0.023 | 3.973 | 0.061 | 3.844 | 0.009 | | |
| | D | 8.914 | 0.120 | 8.873 | 0.043 | 8.824 | 0.022 | 8.824 | 0.037 | 8.755 | 0.008 | 8.753 | △0.032 | 8.771 | 0.070 | 8.703 | △0.002 | 8.789 | △0.038 | 8.846 | 0.001 | 8.883 | 0.044 | 8.916 | 0.066 | 8.816 | 0.031 | | |
| | E | 4.005 | | 4.086 | | 4.046 | | 3.940 | | 3.933 | | 3.804 | | 3.822 | | 3.801 | | 3.851 | | 3.916 | | 4.014 | | 4.100 | | | | | |
| | | 8.950 | | 8.912 | | 8.848 | | 8.800 | | 8.797 | | 8.762 | | 8.845 | | 8.742 | | 8.793 | | 8.898 | | 8.898 | | 9.010 | | | | | |
| | F | 3.964 | | 3.900 | | 3.902 | | 3.725 | | 3.680 | | 3.716 | | 3.734 | | 3.618 | | 3.782 | | 3.700 | | 3.883 | | 3.944 | | | | | |
| | | 8.890 | | 8.810 | | 8.814 | | 8.629 | | 8.660 | | 8.735 | | 8.683 | | 8.659 | | 8.740 | | 8.610 | | 8.860 | | 8.856 | | | | | |
| | G | 14.0 | △1.3 | 15.7 | 0.6 | 12.2 | △5.2 | 16.3 | 1.4 | 18.2 | 3.4 | 14.8 | △2.0 | 15.1 | △1.0 | 12.8 | △4.6 | 17.2 | △2.4 | 15.5 | △1.5 | 13.4 | △3.0 | 16.6 | △1.1 | 15.1 | △0.5 | | |
| | 近畿 | A | 8 | 0 | 7 | △1 | 8 | 0 | 7 | △1 | 8 | 0 | 8 | 0 | 8 | 0 | 8 | 0 | 8 | 0 | 8 | 0 | 8 | 0 | 8 | 0 | 94 | △2 | |
| B | | 46 | △3 | 44 | △3 | 47 | 2 | 49 | 7 | 43 | △3 | 45 | △2 | 45 | △1 | 46 | 1 | 43 | △1 | 41 | △2 | 43 | 1 | 44 | 1 | 536 | △3 | | |
| C | | 4.004 | 0.043 | 3.996 | 0.046 | 3.942 | 0.033 | 3.834 | 0.043 | 3.798 | 0.078 | 3.781 | 0.043 | 3.735 | △0.009 | 3.726 | 0.032 | 3.760 | △0.056 | 3.842 | △0.058 | 3.938 | 0.011 | 3.976 | △0.003 | 3.859 | 0.016 | | |
| D | | 8.867 | 0.018 | 8.814 | △0.014 | 8.822 | 0.034 | 8.772 | 0.034 | 8.770 | 0.020 | 8.763 | 0.010 | 8.694 | 0.024 | 8.677 | 0.006 | 8.686 | △0.062 | 8.802 | △0.004 | 8.830 | 0.026 | 8.848 | 0.004 | 8.778 | 0.008 | | |
| E | | 4.120 | | 4.161 | | 4.210 | | 3.919 | | 3.940 | | 3.930 | | 3.800 | | 3.758 | | 3.880 | | 3.890 | | 4.020 | | 4.110 | | | | | |
| | | 9.100 | | 8.953 | | 9.030 | | 8.878 | | 8.915 | | 8.870 | | 8.800 | | 8.764 | | 8.850 | | 8.960 | | 8.930 | | 9.074 | | | | | |
| F | | 3.938 | | 3.941 | | 3.836 | | 3.798 | | 3.760 | | 3.651 | | 3.673 | | 3.650 | | 3.733 | | 3.800 | | 3.800 | | 3.919 | | | | | |
| | | 8.773 | | 8.744 | | 8.704 | | 8.693 | | 8.662 | | 8.640 | | 8.605 | | 8.610 | | 8.620 | | 8.721 | | 8.722 | | 8.707 | | | | | |
| G | | 51.1 | △3.8 | 51.8 | △2.4 | 54.0 | 3.2 | 56.9 | 11.3 | 53.7 | 3.7 | 57.5 | 2.7 | 56.6 | 0.1 | 58.6 | △0.6 | 59.3 | 2.4 | 57.0 | 4.7 | 58.1 | 2.4 | 56.6 | △0.4 | 55.7 | 3.9 | | |
| 中国 | | A | 3 | 0 | 3 | △1 | 4 | △1 | 5 | 0 | 3 | △2 | 3 | 0 | 4 | 0 | 3 | △1 | 3 | 0 | 3 | 0 | 4 | 0 | 4 | 0 | 42 | △5 | |
| | B | 11 | △1 | 11 | △1 | 12 | △1 | 15 | 1 | 12 | △1 | 12 | 1 | 13 | 1 | 13 | 1 | 12 | 1 | 12 | 1 | 13 | 1 | 12 | 0 | 148 | 3 | | |
| | C | 4.003 | 0.009 | 3.998 | 0.024 | 3.936 | 0.027 | 3.838 | 0.021 | 3.803 | 0.068 | 3.718 | △0.018 | 3.722 | △0.002 | 3.717 | 0.040 | 3.733 | △0.048 | 3.814 | △0.040 | 3.911 | 0.012 | 3.955 | 0.044 | 3.843 | 0.007 | | |
| | D | 8.881 | 0.056 | 8.848 | 0.033 | 8.813 | 0.034 | 8.794 | 0.046 | 8.782 | 0.062 | 8.746 | 0.002 | 8.692 | 0.007 | 8.674 | 0.022 | 8.713 | △0.021 | 8.773 | △0.046 | 8.850 | 0.009 | 8.872 | 0.035 | 8.785 | 0.018 | | |
| | E | 4.107 | | 4.030 | | 4.070 | | 3.880 | | 3.866 | | 3.754 | | 3.780 | | 3.761 | | 3.757 | | 3.859 | | 4.060 | | 4.110 | | | | | |
| | | 8.911 | | 8.887 | | 8.829 | | 8.815 | | 8.790 | | 8.750 | | 8.724 | | 8.771 | | 8.768 | | 8.843 | | 8.880 | | 8.940 | | | | | |
| | F | 3.964 | | 3.951 | | 3.900 | | 3.819 | | 3.746 | | 3.649 | | 3.681 | | 3.674 | | 3.678 | | 3.780 | | 3.864 | | 3.902 | | | | | |
| | | 8.836 | | 8.803 | | 8.790 | | 8.761 | | 8.770 | | 8.744 | | 8.662 | | 8.594 | | 8.686 | | 8.733 | | 8.830 | | 8.770 | | | | | |
| | G | 13.5 | △2.5 | 13.6 | △2.2 | 15.2 | △0.3 | 17.1 | 1.1 | 14.4 | △0.9 | 14.7 | 0.9 | 16.0 | 0.1 | 16.4 | △0.2 | 14.6 | △1.9 | 14.6 | △2.8 | 16.2 | △0.4 | 14.5 | 0.1 | 15.0 | 0.0 | | |
| | 四国 | A | 1 | 0 | 1 | 0 | 1 | 0 | 1 | 0 | 1 | 0 | 1 | 0 | 2 | 1 | 1 | 0 | 1 | 0 | 2 | 1 | 1 | 0 | 2 | 1 | 15 | 3 | |
| B | | 10 | 2 | 10 | 4 | 10 | 2 | 10 | 1 | 10 | 1 | 9 | 0 | 10 | 1 | 9 | 0 | 9 | 0 | 10 | 1 | 9 | 0 | 10 | 0 | 116 | 12 | | |
| C | | 3.924 | △0.098 | 3.928 | 0.054 | 3.890 | 0.082 | 3.770 | 0.000 | 3.777 | 0.059 | 3.747 | 0.024 | 3.714 | △0.048 | 3.706 | 0.001 | 3.768 | △0.002 | 3.865 | △0.017 | 3.947 | 0.092 | 3.999 | 0.101 | 3.837 | 0.025 | | |
| D | | 8.824 | 0.029 | 8.822 | 0.023 | 8.740 | △0.016 | 8.728 | 0.024 | 8.666 | △0.002 | 8.690 | 0.026 | 8.656 | △0.063 | 8.618 | 0.061 | 8.709 | 0.014 | 8.773 | 0.089 | 8.805 | 0.115 | 8.847 | 0.055 | 8.741 | 0.033 | | |
| E | | 3.924 | | 3.928 | | 3.890 | | 3.770 | | 3.777 | | 3.747 | | 3.721 | | 3.706 | | 3.768 | | 3.930 | | 3.947 | | 4.030 | | | | | |
| | | 8.824 | | 8.822 | | 8.740 | | 8.728 | | 8.666 | | 8.690 | | 8.666 | | 8.618 | | 8.709 | | 8.810 | | 8.805 | | 8.866 | | | | | |
| F | | 3.924 | | 3.928 | | 3.890 | | 3.770 | | 3.777 | | 3.747 | | 3.670 | | 3.706 | | 3.768 | | 3.851 | | 3.947 | | 3.992 | | | | | |
| | | 8.824 | | 8.822 | | 8.740 | | 8.728 | | 8.666 | | 8.690 | | 8.590 | | 8.618 | | 8.709 | | 8.765 | | 8.805 | | 8.760 | | | | | |
| G | | 18.6 | 2.1 | 18.2 | 5.2 | 18.2 | 1.4 | 20.1 | 2.5 | 20.5 | 2.5 | 19.7 | 1.6 | 23.0 | 6.1 | 19.6 | 5.3 | 20.0 | 1.7 | 24.3 | 4.3 | 19.7 | 0.0 | 24.5 | 5.6 | 20.4 | 3.0 | | |
| 九州 | | A | 5 | 0 | 5 | 0 | 5 | 0 | 5 | 0 | 5 | 0 | 3 | △2 | 4 | △1 | 5 | 1 | 3 | △1 | 3 | △1 | 4 | 0 | 4 | 1 | 51 | △3 | |
| | B | 17 | 4 | 22 | 8 | 18 | 6 | 23 | 2 | 22 | 4 | 16 | △4 | 15 | △1 | 19 | 3 | 14 | △3 | 15 | 0 | 16 | △2 | 12 | △5 | 209 | 12 | | |
| | C | 4.103 | 0.071 | 4.050 | 0.055 | 4.042 | 0.109 | 3.942 | 0.102 | 3.878 | 0.099 | 3.827 | 0.039 | 3.825 | 0.020 | 3.786 | 0.035 | 3.829 | △0.067 | 3.984 | 0.051 | 4.063 | 0.111 | 4.117 | 0.041 | 3.955 | 0.057 | | |
| | D | 8.834 | △0.001 | 8.837 | 0.010 | 8.842 | 0.096 | 8.771 | 0.053 | 8.758 | 0.016 | 8.759 | 0.026 | 8.713 | 0.076 | 8.674 | △0.020 | 8.830 | 0.083 | 8.788 | △0.056 | 8.927 | 0.143 | 8.929 | 0.067 | 8.803 | 0.040 | | |
| | E | 4.125 | | 4.090 | | 4.121 | | 3.994 | | 3.909 | | 3.870 | | 3.841 | | 3.821 | | 3.856 | | 4.019 | | 4.164 | | 4.310 | | | | | |
| | | 9.030 | | 8.888 | | 8.890 | | 8.840 | | 8.843 | | 8.835 | | 8.779 | | 8.879 | | 8.834 | | 8.843 | | 9.012 | | 9.040 | | | | | |
| | F | 4.010 | | 3.950 | | 3.945 | | 3.840 | | 3.780 | | 3.750 | | 3.740 | | 3.670 | | 3.710 | | 3.790 | | 3.880 | | 3.990 | | | | | |
| | | 8.773 | | 8.806 | | 8.790 | | 8.679 | | 8.688 | | 8.700 | | 8.639 | | 8.556 | | 8.780 | | 8.742 | | 8.800 | | 8.800 | | | | | |
| | G | 16.4 | △0.1 | 19.9 | 1.7 | 16.7 | △2.4 | 21.6 | 2.2 | 20.5 | 2.7 | 16.0 | △1.9 | 15.9 | △1.2 | 17.5 | △2.9 | 14.9 | △6.8 | 15.1 | △7.2 | 16.0 | △3.8 | 15.4 | △3.2 | 17.2 | △0.2 | | |
| | 全国計・平均 | A | 47 | △1 | 45 | △4 | 46 | △5 | 44 | △2 | 46 | 0 | 43 | △7 | 47 | △1 | 45 | △3 | 46 | 0 | 47 | 1 | 43 | △2 | 46 | 2 | 545 | △22 | |
| B | | 648 | 20 | 653 | 40 | 653 | 35 | 662 | 20 | 655 | 11 | 655 | 2 | 666 | 11 | 652 | 4 | 655 | 3 | 638 | △14 | 657 | 18 | 649 | △4 | 7843 | 146 | | |
| C | | 4.012 | 0.038 | 3.998 | 0.050 | 3.976 | 0.053 | 3.914 | 0.037 | 3.847 | 0.056 | 3.814 | 0.058 | 3.800 | 0.031 | 3.761 | 0.042 | 3.811 | △0.020 | 3.939 | 0.008 | 4.036 | 0.049 | 4.042 | 0.047 | 3.911 | 0.037 | | |
| D | | 8.844 | △0.004 | 8.829 | △0.012 | 8.814 | △0.010 | 8.788 | △0.009 | 8.776 | 0.022 | 8.755 | 0.010 | 8.731 | 0.020 | 8.698 | 0.014 | 8.745 | △0.025 | 8.833 | △0. | | | | | | | | |